

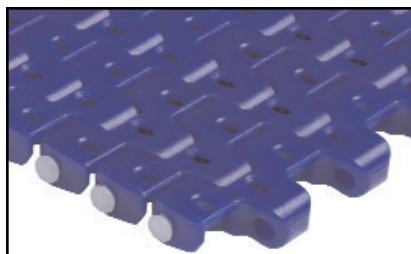
# **Fast Delivery**

## **modular belting from stock**



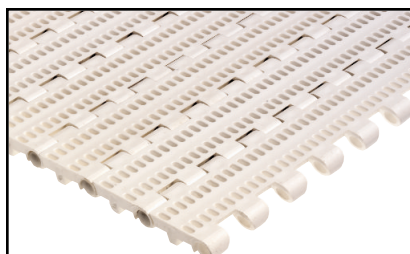
3800 Stahl Drive  
Grand Rapids, MI 49546  
800 451-4537  
(800) 644-7454  
[sbcinfo@sparksbelting.com](mailto:sbcinfo@sparksbelting.com)

**S12-406** 1/2"  
(12.5mm) pitch,  
partially open  
(8%) for drainage.  
*Available:* PE in  
N.



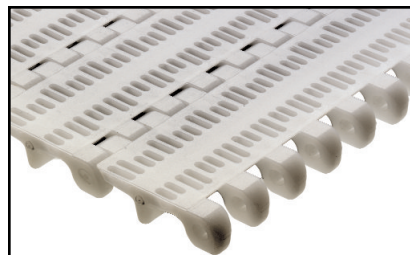
**S25-800** 1" (25mm)  
pitch has a closed  
flat top.  
*Available:* PP in W.

**S12-408** 1/2"  
(12.5mm) pitch  
with a closed sur-  
face. *Available:*  
PP in W and  
POM in BL.



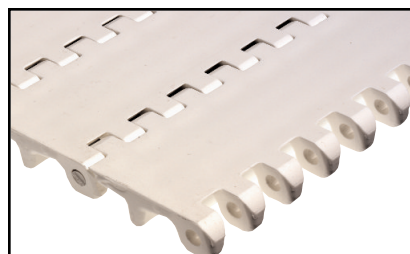
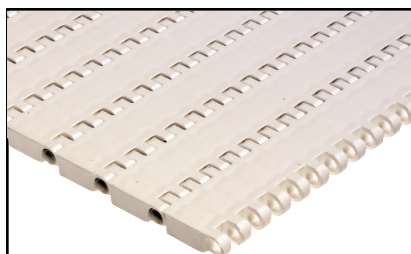
**S25-806** 1" (25mm)  
pitch has a smooth  
perforated surface  
for drainage.  
*Available:* PP in W.

**S25-400** 1"  
(25mm) pitch has  
a smooth, open  
top for cooling and  
freezing.  
*Available:* PP in  
W, POM in BL.



**S50-806** 2" (50mm)  
pitch has a smooth,  
open top for heavy  
applications that  
need drainage.  
*Available:* PE in N.

**S25-408** 1"  
(25mm) pitch has  
a closed flat top.  
*Available:* POM  
in BL.



**S50-808** 2" (50 mm)  
pitch has a closed  
flat top for heavy  
applications.  
*Available:* PE in W.

## **Call 800-451-4537**